

welcome to



Safety Net Services

introduction

Safety Net Services has been operating nationwide within the construction industry since 1998 and is currently working in partnership with a variety of principal contractors.

It is our aim to provide clients with the highest quality safety solutions at sensible prices, helping your Construction Managers to focus on the project in hand and enabling your workers to move around freely, working safely, quickly and effectively.



Safety Net Services



We offer a number of different solutions for working at

height

Fall Arrest Safety Nets

A modern light weight collective safety system. Compliant to **BS EN 1263-1** and installed by our specialist crew of riggers.

Roof Edge Protection Net Barrier System

A practical and cost effective alternative to scaffolding, Net Barriers provide edge protection on many of today's modern industrial and commercial developments. **EN 13374** compliant, it is fast to install, unobtrusive to site workers and flexible in its application.

Access Stair Towers

Designed to be used in combination with the Net Barrier system this fully enclosed staircase provides safe access to and from the work area. Available in a modular system, it can be adapted to suit many applications.

Mesh Barriers

Bright red mesh barriers and posts that provide clear and safe protection from dangerous edges. Particularly suitable for mezzanine floors.



All of the above systems can be used in combination to provide a package solution for your **working at height safety needs**. In order to provide both a technical and financially acceptable solution, we will plan a tailored **fall arrest package** suitable for each of your individual projects.





safety nets

why safety nets?

Safety nets protect workers on site. They prevent fatalities and serious accidents when working at height.

In the majority of situations safety nets have advantages over other forms of fall arrest. The UK Health & Safety Executive regard nets as their "preferred method of fall arrest when working at height".

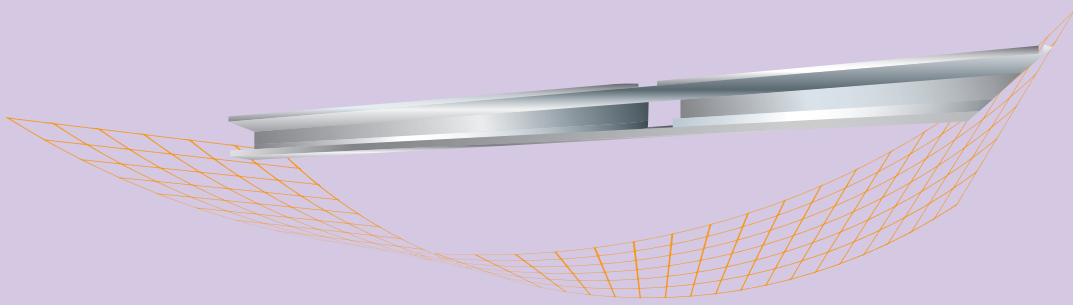
Our safety nets comply with stringent UK and European regulations and are annually tested in laboratories to ensure their robustness.



Safety Net Services



The technical side of fall prevention and fall arrest has moved away from simple strength issues and has embraced energy absorption as the fundamental principle governing the design and the performance.



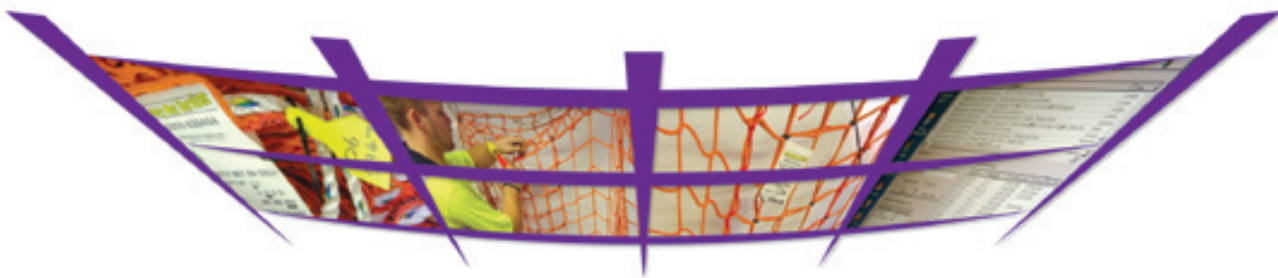
It is of vital importance that in order to work as an effective system we ensure the following points are adhered to:

- Nets comply with **BS EN 1263-1**
- Rigging is carried out by riggers who are fully qualified
- Equipment is systematically maintained



The modern, lightweight safety nets used by Safety Net Services are fitted as close to the work position as possible. By fitting safety nets so close to the working level they prevent a fall causing personnel injury and also offer a collective level of protection, as such, they are an improvement on the use of harnesses and lanyards.





system compliance

quality, safety & maintenance

Quality and safety are of the utmost importance to us therefore all our nets are certified and bear the appropriate GS safety mark.

Using our unique **Netlog Software** we have the ability to track over 3500 nets at any one time and can produce comprehensive reports for the nets used on each of your contracts.



Safety Net Services



system compliance

The product must comply with **BS EN 1263-1**

- Minimum strength of rope edge - 30kN
- Mesh size - 45mm, 60mm or 100mm
- Minimum energy absorption - 4.14kj

We use the best quality nets to provide you and your staff with peace of mind.



The product must be **systematically maintained**

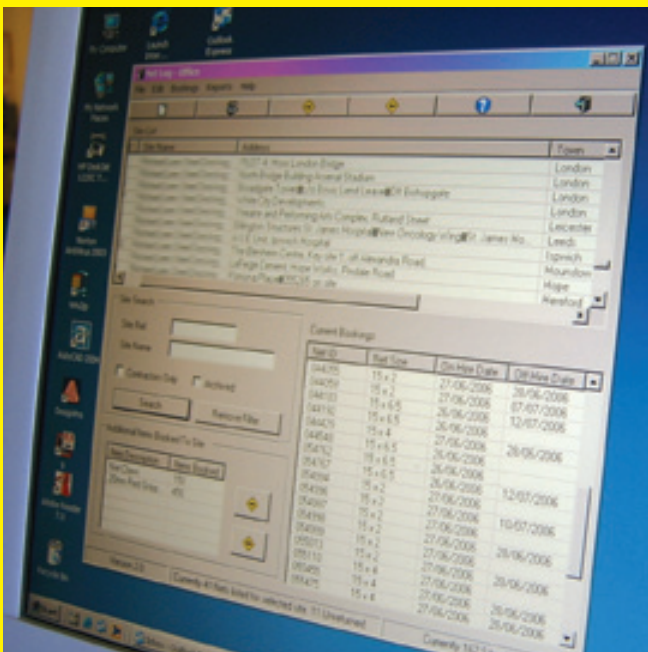
A detailed inspection is carried out on each net before and after each use and any repairs carried out are logged. The status of any net on contract can be e-mailed instantly to the hirer.

Details include:

- **CERTIFICATE OF CONFORMITY**
- **DATE OF MANUFACTURE**
- **ANNUAL TEST RESULTS**
- **SUMMARY DAMAGE REPAIRS CARRIED OUT**
- **HISTORICAL HIRE DATA FOR EVERY NET**

BS EN 1263-1

NET LOG





system compliance

riggers training

All our riggers are trained to install to **BS EN 1263-2**.

Safety Net Services has set itself apart from its competitors by ensuring the quality and training of its workforce through minimal use of sub-contract labour.

FASET
Fall Arrest Safety Equipment Training

Safety Net Services is one of the founder members of **FASET** - the trade association and training body for safety netting. FASET sets the standards for the supply, training and installation of safety nets in the UK.



Safety Net Services

system compliance

Rigging must be carried out by **competent riggers**

All our riggers undergo a specialised 'General Riggers Training' course written by FASET industry experts.

FASET
Fall Arrest Safety Equipment Training

Our new recruits undergo at least 200 hours of practical and classroom training, only once the test and assessments are complete can they apply for a **CSCS/FASET** Safety Net Rigger Card as proof of their competence.

Modules covered as part of the training include:

- **SAFE WORKING AT HEIGHT • WORKING AT HEIGHT LEGISLATION**
- **SAFETY NET TECHNOLOGY • RIGGING PRINCIPLES AND TECHNIQUES**
- **ATTACHMENT POINTS • INSPECTION OF SAFETY NETS**
- **CARE AND STORAGE OF NETS • RIGGING SKILLS AND KNOT TYING**



In addition to the above our riggers are also trained in:

- **IRATA ROPE ACCESS TRAINING**
- **IPAF TRAINING WORKING WITH MEWPS**
- **PASMA ALUMINIUM TOWER SYSTEMS**
- **COMBISAFE MANUFACTURERS TRAINING**
- **CSCS/FASET CERTIFICATION SCHEME**
- **SPANSET WALKABOUT LIGHTWEIGHT PLATFORM INSTALLATION**
- **ALL SUPERVISORS ARE SSSTS QUALIFIED**



**BS
EN
1263-2**





mesh barrier systems

mesh barriers

The Steel Mesh Barrier System used by Safety Net Services has been the forerunner in edge protection for over a decade.

Used instead of tubular scaffolding, the steel mesh barrier is very simple to assemble, the bright red colour provides a clear warning for edge hazards.



Safety Net Services



Adjustable, light and simple to install and Strong

This system provides a safe option when providing temporary edge protection on mezzanine floors.

It is widely accepted in the industry that mesh barriers are more suitable than tubular fittings because of its:

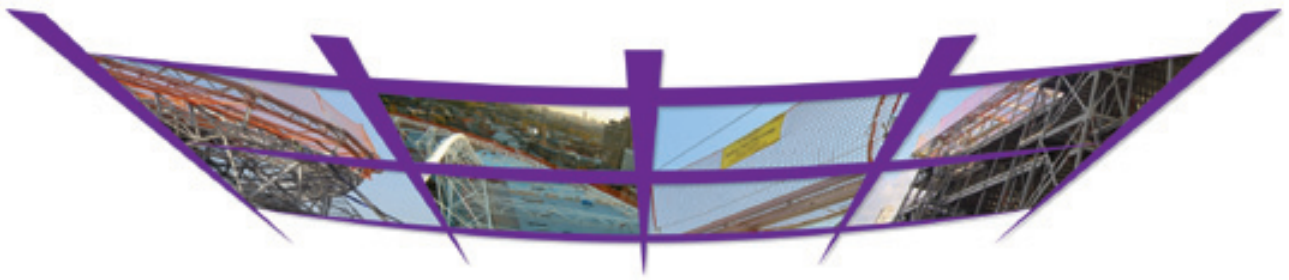
- **BUILT IN TOE BOARDS**
- **REGULAR SUPPORTS**
- **VERSATILITY**



The steel mesh barrier is simple to join, is very robust and has a built in toe board, which is standard requirements today and can be fitted into a wide range of attachments, selected according to the constructional situation.

It can be used in a number of applications.





roof edge protection

net barrier system

The Net Barrier System is being used across the UK and is a lightweight, practical and safe solution to many edge protection requirements.

The system is **EN13374** temporary edge protection compliant and the barrier nets are subject to the same strict measures as our fall arrest nets.



Safety Net Services



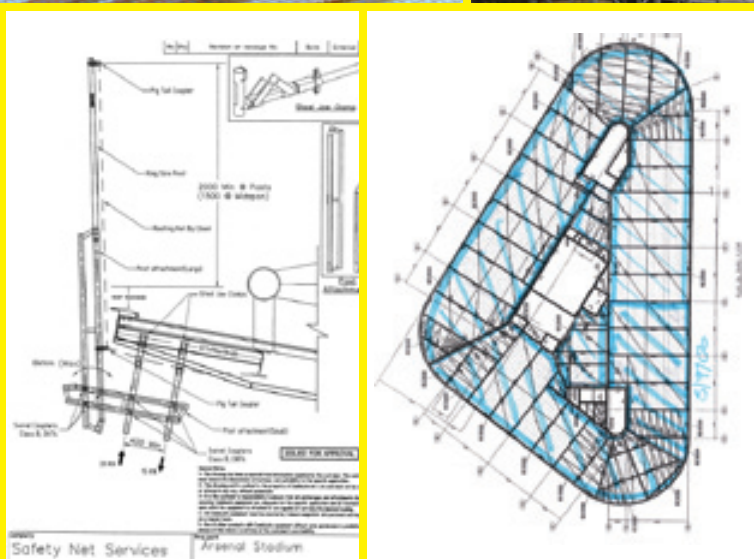
Lightweight, practical and safe solution for edge protection

The system is suitable for both simple large bay warehouses and roofs with more complicated access needs and overhangs such as the Arsenal Emirates Stadium in North London. (Below). The nets extend up to 2 metres above finished roof and can span up to 10 metres between supports.

Being a modular system with small component parts, no large scaffold poles are required. The Safety Net Barrier System is installed with ease as parts can be hoisted up in the basket of mewp, therefore the hours spent and the risk associated with working on exposed edges when installing traditional tube and fitting scaffold is eliminated. Once erected the net system allows work to continue around the building without obstruction.



Prior to any installation we can produce design sketches and calculations to prove system integrity, if installed with the safety nets it will provide total encapsulation and provide an element of debris containment.



Arsenal Emirates Stadium





safety net fans

effective protection

Safety Net Fans perform several functions during the building process, not only forming an effective fall-arrest system for the workforce, but also protecting pedestrians and workers from falling objects and debris. The Safety Net Fan is available in three standard models: the first is designed to catch falling objects and debris; the second is designed to arrest falling persons and objects; the third, the Maxi, has been designed to extend the catching width of the standard fan increasing the level of containment provided. They are available in two standard lengths, 4.0m and 6.0m, with a projection of 3.0m from the building. All fall-arrest nets are tested and approved in accordance with EN 1263-1.



Safety Net Services

Freephone: **08007 833957**
Website: **www.safetynets.co.uk**
Email: **sales@safetynets.co.uk**



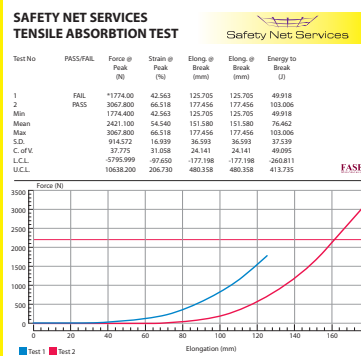
Adaptable, lightweight and highly versatile system, effective fall arrest and debris containment

The **SAFETY NET FANS** can be designed to catch falling persons or debris. Safety Net Fans consist of two steel brackets supporting a safety net which allow a projection range of 3 metres from the building. Fans are tested and approved in accordance with **EN 1263-1**.

The unique design enables the fan to be folded in towards the building's facade allowing easy access for cranes, loading etc. As standard, the fan is delivered with a 20 x 20mm debris net laced together with the safety net, enabling the net to catch small particles of debris. Debris containment can be enhanced by overlaying with an extra fine mesh.

FULLY INTEGRATED SERVICE

- **SUPPLY, FIX & HIRE OF COMPLETE SAFETY NET FAN SYSTEM**
- **LABOUR ONLY TO INSTALL CLIENTS OWN EQUIPMENT**
- **ANNUAL TESTING OF NETS TO EN 1263-1 BY QUALIFIED STAFF**
- **COMPLETE REPAIR AND NET MAINTENANCE SERVICE**
- **A NET MANAGEMENT SYSTEM TO ENSURE CLIENTS NETS ARE FULLY COMPLIANT WITH EN 1263-1**
- **FULL DESIGN SERVICE PROVIDED BY COMBISAFE WITH DETAILED INSTALLATION DRAWINGS**



“SAFETY NET SERVICES HAVE DEVELOPED A UNIQUE SYSTEM FOR RAISING & FITTING SAFETY NET FANS WITHOUT THE NEED TO RELY ON THE USE OF A TOWER CRANE. THIS ENSURES THE FANS ARE INSTALLED IN A SAFE AND EFFICIENT MANNER WITH MINIMUM DISRUPTION TO OTHER TRADES.”



temporary decking system



WalkAbout comprises a durable mesh membrane supported by a tensioned webbing matrix. The platform is reassuringly stable and capable of achieving a surprising loading performance. This is a versatile, proven design with all the technical data that you would expect from such an innovative system.

A worker protected from a fall hazard who still feels a sense of exposure is unlikely to operate in as relaxed a manner as they would at ground level.

WalkAbout succeeds in adding that important sense of security to a technical solution, providing the worker and installer with improved safety and environment.



WalkAbout is a tensioned decking system designed to enable workers to access difficult or remote areas at height. The system comprises a durable mesh membrane supported by a tensioned webbing matrix. Tension is easily set to pre determined levels using the Patented “TFI” a unique device that is integral to the ratchet assembly.

Anchorage of the system can be achieved in a variety of ways including bolts, beam clamps and slings depending upon the type of structure or vulnerability of protective coatings. Installations are provided by us and we will be able to specify suitable anchorages for the system as well as the optimum panel layout for the application.



WalkAbout System Key Features & Benefits

- Low deflection working platform reduces worker fatigue
- Decking material allows air and water permeation but disguises the height exposure to workers making for a more relaxed working environment
- Decking material is highly resistant to tearing and penetration
- Suitable for 4 users plus tools (450kg) per installed panel
- Available in a range of sizes for installations in a wide variety of structures
- Patented Tension Force Indicator allows for accurate pre-tensioning
- Tailored loading plans, installation layout and sequencing and technical support available from Safety Net Services
- Installations by trained and experienced rigging teams
- On-going supervision if required





working at height

facts and figures

In 2007/2008 the HSE reported that as a result of falls from height in the workplace -

- **34 people died**
- **3235 suffered a serious injury**
- **over half of the fall at height fatalities were from the construction industry in 2007/8**



Safety Net Services

Freephone: **08007 833957**
Website: **www.safetynets.co.uk**
Email: **sales@safetynets.co.uk**



FATAL INJURY



- **WORK ABOVE GROUND LEVEL;**
- **COULD FALL FROM AN EDGE, THROUGH AN OPENING OR FRAGILE SURFACE; OR**
- **COULD FALL FROM GROUND LEVEL INTO AN OPENING IN A FLOOR OR HOLE IN THE GROUND; YOU WILL BE WORKING AT HEIGHT, BECAUSE YOU CAN FALL FROM ONE LEVEL TO ANOTHER.**

Our vast experience in site safety and installation of fall arrest systems, together with our high quality safety solutions can all be put into place and planned to suit all your safety and risk avoidance needs.



CAN YOU AFFORD TO TAKE THE RISK?





contracts awarded

a selection of recent contracts

- Glasgow Museum of Transport
- Liverpool Maritime Museum
- Welsh Assembly Government
- St. Davids 2 Shopping Centre
- Camelford School, Cornwall
- B&Q Headquarters, Eastleigh
- Five Schools in Harrow
- Penbury Hospital, Kent
- Heron Tower, London
- Swiss Centre, London
- Stratford City Shopping Centre
- Peterborough Acute Hospital
- Pinderfield Hospital, Wakefield



Safety Net Services

Freephone: **08007 833957**

Website: **www.safetynets.co.uk**

Email: **sales@safetynets.co.uk**



NATIONWIDE COVERAGE

A selection of recent contracts undertaken by Safety Net Services

Safety Net Services

Company Name: Brookglen Systems Ltd
T/A Safety Net Services
Registered Office: Glanyrafon Industrial Estate
Aberystwyth, Ceredigion SY23 3JQ

Telephone: **01970 626454**
Freephone: **08007 833957**
Fax: **01970 626881**

Email: enquiries@safetynets.co.uk
Website: www.safetynets.co.uk

MUSEUM OF TRANSPORT GLASGOW

Safety netting under complex designed roof.

Main Contractor:
Bam Group

MARITIME MUSEUM ALBERT DOCK LIVERPOOL

Roped access safety netting installed to roof.

Main Contractor:
Pihl Galliford Try

WELSH ASSEMBLY GOVERNMENT ABERYSTWYTH

Safety netting for roofing works.

Main Contractor:
Carillion PLC

ST DAVIDS 2 SHOPPING CENTRE CARDIFF

Wales' largest shopping centre.

Safety netting installed to underside of steel decking.

Main Contractor:
Sir Robert McAlpine

CAMELFORD SCHOOL CORNWALL

Safety netting to underside of roof & Combisafe mesh & net edge protection.

Main Contractor:
Kier Group

B&Q HEADQUARTERS EASTLEIGH

Safety netting & Combisafe mesh edge protection

Main Contractor:
Sir Robert McAlpine

FIVE SCHOOLS IN HARROW

Safety netting to underside of roof & floor plus edge protection to each school.

Main Contractor:
Kier Group

PENBURY HOSPITAL KENT

Safety netting & Combisafe net edge protection.

Main Contractor:
Laing O'Rourke

PINDERFIELD HOSPITAL WAKEFIELD

Safety netting to under side of roof & Combisafe mesh & net edge protection.

Main Contractor:
Balfour Beatty PLC

PETERBOROUGH ACUTE HOSPITAL

Safety netting & tubular edge protection using combination of access methods.

Main Contractor:
Multiplex Construction

STRATFORD CITY SHOPPING CENTRE

Europe Largest Shopping centre.

250,000 m2 of safety netting under steel decking installed using rope access.

Main Contractor:
Westfield Group

SWISS CENTRE LEICESTER SQUARE

Installation of Combisafe safety net fans for fall arrest & debris containment.

Main Contractor:
McAlee & Rushe Group

HERON TOWER LONDON

Roped access safety netting installed to under side of steel decking.

Main Contractor:
Skanska



Glasgow

SCOTLAND

NORTH EAST

NORTH WEST

YORKSHIRE

York

Leeds

Leyland

Liverpool

Manchester

EAST MIDLANDS

WEST MIDLANDS

WALES

LONDON

SOUTH EAST

SOUTH WEST